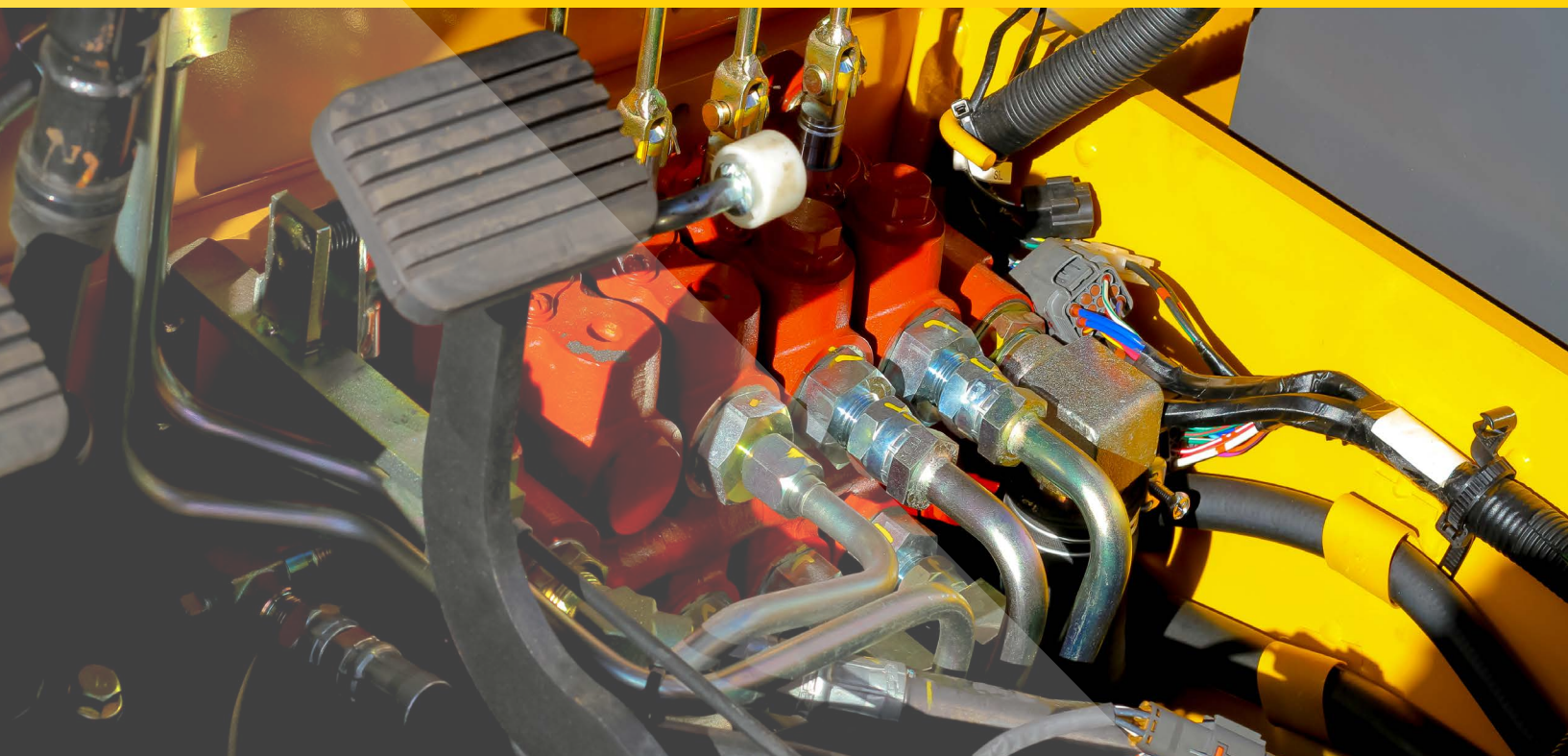


## ALL EYES ON SECURITY FOR CASCADE'S MANCHESTER DEPOT



### ABOUT

The Cascade Manufacturing Company UK Ltd is a leading worldwide supplier of forklift truck attachments and related products. Established in 1943 in

Portland, Oregon, the company now also has headquarters in Europe, the Middle East, Asia and Africa.

# CASE STUDY

## MEETING THE REQUIREMENT

Cascade prides itself on continuous improvement in products, services, interpersonal relationships, competitiveness and profitability. At its Manchester depot, a need for a more effective method of controlling and monitoring staff attendance and time-keeping, along with a more efficient Access Control system was recently identified.

The most important thing for Cascade was that any new system would be compatible with the Astrow Time & Attendance system supplied by STANLEY Security which was already in place and which had recently been upgraded to work seamlessly with Cascade's new in house software. Astrow is a browser-based Time & Attendance solution with an emphasis on ease of use. On the market for over 20 years, Astrow is a modular system for full management of staff attendance including overtime, flexi-time, holiday and absence tracking. Whenever an employee enters or leaves the site, Astrow's terminals communicate this information via the company's network and can also provide additional information to the employee. Astrow has an integrated Team Manager to allow HR personnel to manage clocking, absences, day programs, flexi-time balances and much more as well as being able to enter data such as missing clocking or absences.

Astrow works with a range of different reader technologies, including card readers, proximity based fob readers and, with the latest version, biometric terminals. Cascade had been using proximity readers but was keen to further improve its monitoring of staff attendance, eliminate 'buddy clocking' (a term used to describe a situation where somebody will clock onto an employee system for a colleague using that person's fob or card, so that person will be paid for a shift that they have not worked) and increase overall security. Cascade began to look at biometric systems as an alternative, made possible by the recent upgrade of the Astrow software. Fingerprint recognition was dismissed as unsuitable as lots of employees within the site wear protective hand-wear and, due to the nature of the site, the readers would become dirty very quickly. EyeLock was instead chosen as the most suitable for the site.

The EyeLock system was superior for a number of reasons, in particular its security, convenience and

accuracy and the fact that the system is quick and easy to use. Essentially an eye recognition security system, EyeLock is a suite of the most advanced, efficient, cost-effective iris-based biometric technology which effectively reduces identity-based fraud by securely matching people with the unique biometric markers associated with their irises – a method second only to an individual's DNA as a proven biological constant.

Not to be confused with a Retinal Scan which works by identifying blood vessels within the eye, biometric iris recognition is an automated method of biometric identification that uses mathematical pattern-recognition techniques on video images of one or both of the irises of an individual's eyes, whose complex, random patterns are unique, stable, and can be seen from some distance. The human iris has approximately 2000 points that are variable from person to person, making it the most stable biometric template available and, the EyeLock detects these key features whilst simultaneously employing a 'life verifier' which recognises the absence of a live person and denies access. Its error rate is one in 300 million per eye – impressive figures by any standard.

Having shortlisted the EyeLock system, members of Cascade's HR Department attended a demonstration at STANLEY Security's premises where they were impressed with the features and usability of the system. STANLEY was able to install two EyeLock terminals into Cascade's premises quickly and easily, placing one in Reception and one by the warehouse. These were then integrated into the now compatible Astrow Time & Attendance terminal so that EyeLock communicates directly with the system allowing authorised employees to quickly and easily monitor staff movements.



# CASE STUDY

## THE RESULT

The main objective for Cascade was to find an efficient and secure system of controlling and monitoring staff attendance and time-keeping and so it was of paramount importance that any new system could be easily and effectively integrated with the Time & Attendance system in place. This objective was very effectively met by STANLEY Security's carefully planned and executed installation of the EyeLock terminals and the subsequent integration with the Astrow Time & Attendance system. The EyeLock system has also helped to improve overall security at the site and has speeded up the process of entry of all 75 users.

Kathryn Taylor, HR Business Partner of Cascade UK Ltd, who worked with STANLEY Security on the project, says that some users were initially sceptical about the new system but, since the installation, they have found that the system is quick and easy to use and learn. Kathryn says, "The main benefits to the

company are that it eliminates the instances of users either forgetting or losing their fobs, resulting in administrative issues and increased security presence. The system works very well with the company's Astrow Time & Attendance system and I'm happy to confirm that the service provided by STANLEY Security has been exemplary with quick, hassle-free installation and fast and efficient trouble-shooting of any issues."

EyeLock's innovative biometric access control technology includes proprietary camera, lighting technology, chip-sets, software and physical form factors for capturing iris data. There are a number of products in the range, including the top of the range HBOX multi-model biometric reader for up to 50 people per minute, the EyeSwipe for up to 30 people per minute, the EyeSwipe Mini, a cost-effective replacement for card based access control systems and the entry level EyeSwipe Nano.

# STANLEY<sup>®</sup>

## Security

For more information on which STANLEY system is best suited for your business please call us on: **0844 254 0032** or email us at: [info@stanleysecurity.co.uk](mailto:info@stanleysecurity.co.uk) or visit [stanleysecurity.co.uk](http://stanleysecurity.co.uk)

STANLEY Security Solutions Ltd. Registered in England and Wales No. 181585. Registered Office: STANLEY House, Bramble Road, Swindon, Wiltshire SN2 8ER. VAT No. 232 2446 95. The information contained in this publication is accurate as at the date of printing.